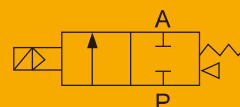


## SLG

2/2 Solenoid Valve (N.C.)



SLG-15



SLG-20/25

High Pressure

### Product Features

- \* Normal close, brass body
- \* High pressure, PTFE seal
- \* Piston pilot solenoid valve with high working pressure and temperature
- \* To reduce the power consumption of 80% energy-saving

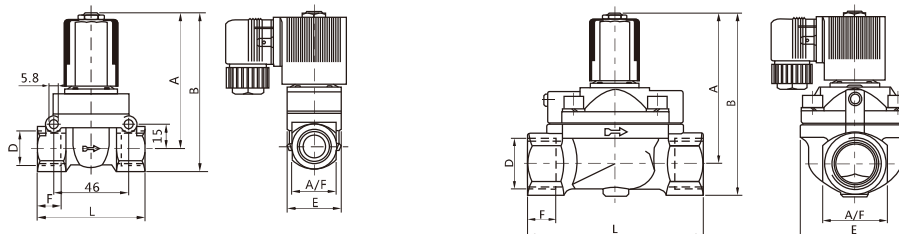
### How to Order?

Series No.	Port Size	ID Code	Voltage	Coil Form	Thread Type
SLG	15: 1/2 " 20: 3/4 " 25: 1 "	Blank: Standard type N: Low power type	E1: AC110V E2: AC220V E3: AC380V E4: DC24V E5: DC12V E6: AC36V E7: AC24V	Blank: DIN connector F: Flying leads	Blank: G P: PT T: NPT

### Order Example:

SLG Series solenoid valve, 1/2 " port size, AC220V, DIN connector, G thread, ERP code is: SLG-15E2

### Main Dimension



Model	Port size (G)	Orifice (mm)	A	B	F	E	L	A/F
SLG-15	1/2"	13	76	90	13	32	64	28
SLG-20	3/4"	20	99.5	118	16	60	91	41
SLG-25	1"	25	99.5	118	16	60	91	41

### Specifications

Model	SLG-15E2	SLG-20E2	SLG-25E2
Working medium	Air, Water, Oil		
Acting type	Pilot type, N.C		
Orifice (mm)	13	25	25
Cv value	2	5	10
Port size	1/2"	3/4"	1"
Working pressure (Bar)	Air:1~50, Liquid: 1~40	Air:1~30, Liquid: 1~25	Air:1~30, Liquid: 1~25
Guaranteed pressure(Bar)	75	40	
Voltage range	±10%		
Working temperature (℃)	-5~150		
Protect Class	IP65		
Body material	Brass		
Seal material	PTFE		

Voltage: AC220V

