

BBFS Paddle Water Flow Switch

This product adopts target sensor, water cooling system or other fluid circuit can be used, the setting value of the controller is adjustable

Application:

Pressure is lower than 1Mpa (10 kg), temperature is 1-100 degrees, motor is more than 500W, connect to AC connector, one normally open and one normally closed

Details:

The mechanical life of the micro switch is more than 1 million times, and the contact capacity is 15A 250V

BBFS-25 thread 1 inch, DN25, diameter 32-33 mm, target width 27 mm, 5 target slices, lengths of 150 mm, 125 mm, 90 mm, 60 mm, 35mm.

BBFS-20 thread 6 points, DN20, diameter 25-26 mm, target width 15 mm, 3 targets, length 90 mm, 60 mm, 35 mm.

BBFS-15 thread 4 points, DN15, diameter 20-20.5 mm, target width 15 mm, 3 targets, length 90 mm, 60 mm, 35 mm.

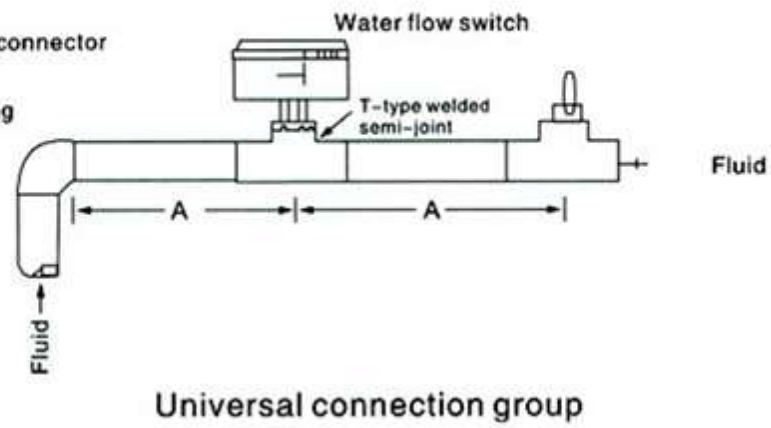
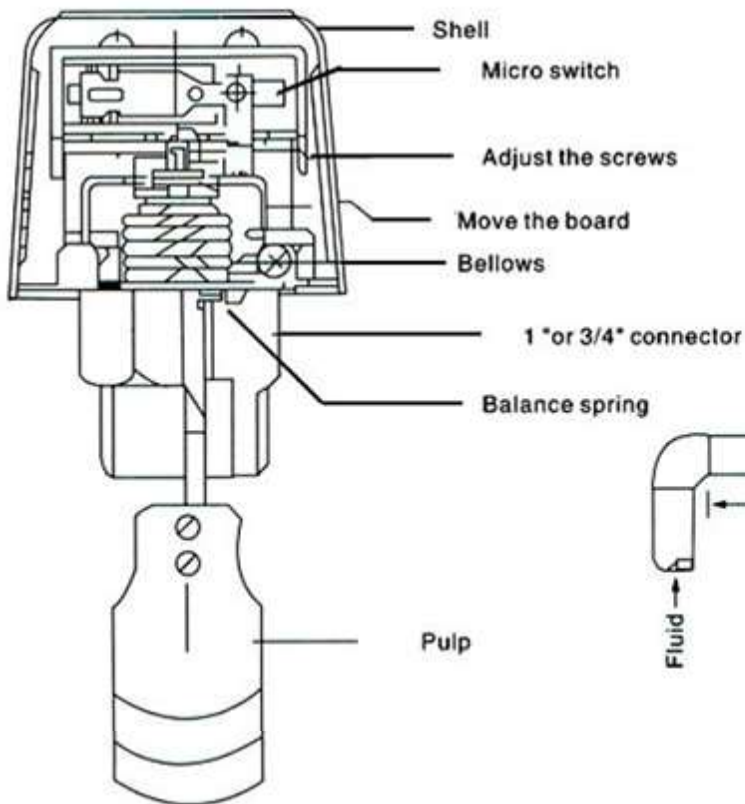
Package includes
1 X Flow Switch

• • • •

PARAMETER DESCRIPTION

More specifications available

Model	BBFS-15 / BBFS-20 / BBFS-25
Control method	Switch
Maximum static pressure	10kgf/cm ² , 20kgf/cm ²
Ambient temperature range	0-60℃
Maximum liquid temperature	100℃
Electronic switch	Single vote double vote:200VAC, 15A
Connector body	Screw terminal



Blade 304 stainless steel

Electrical Ratings

Rated Voltage(V)		COS		
Rated Amps(A)		Power rate Cos	125VAC	250VAC
Non-Inductive current		1	15	15
Inoduction current	Rated current	0.75	2.5	2.5
	Instantaneous current	0.45	21	15

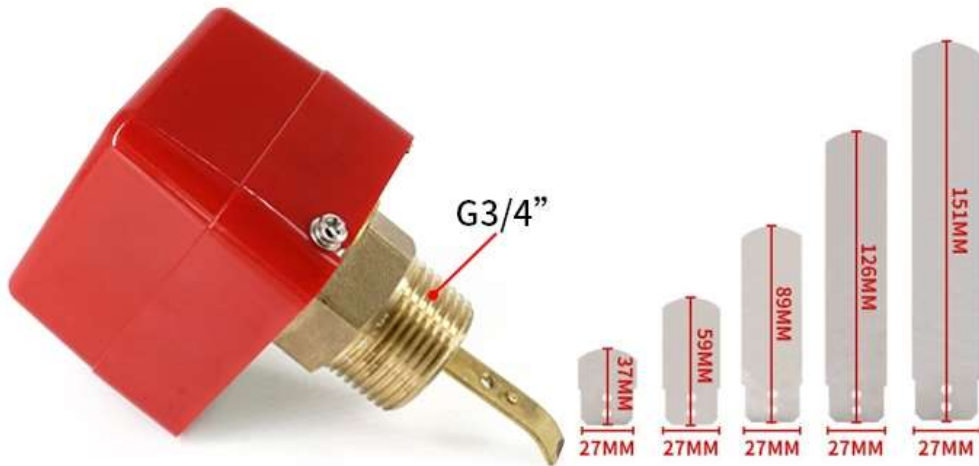
PRODUCT SELECTION

More specifications available

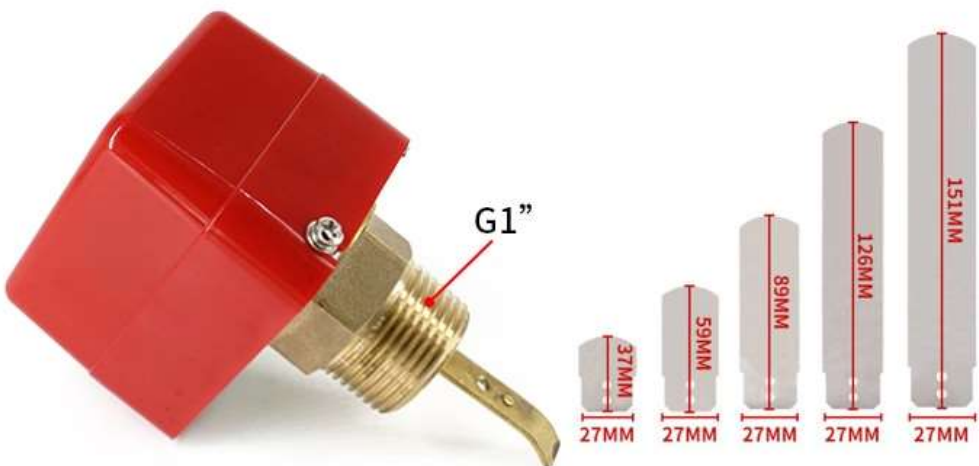
model	size	Target Plate
BBFS-15	G1/2"	5 slices



model	size	Target Plate
BBFS-20	G3/4"	5 slices

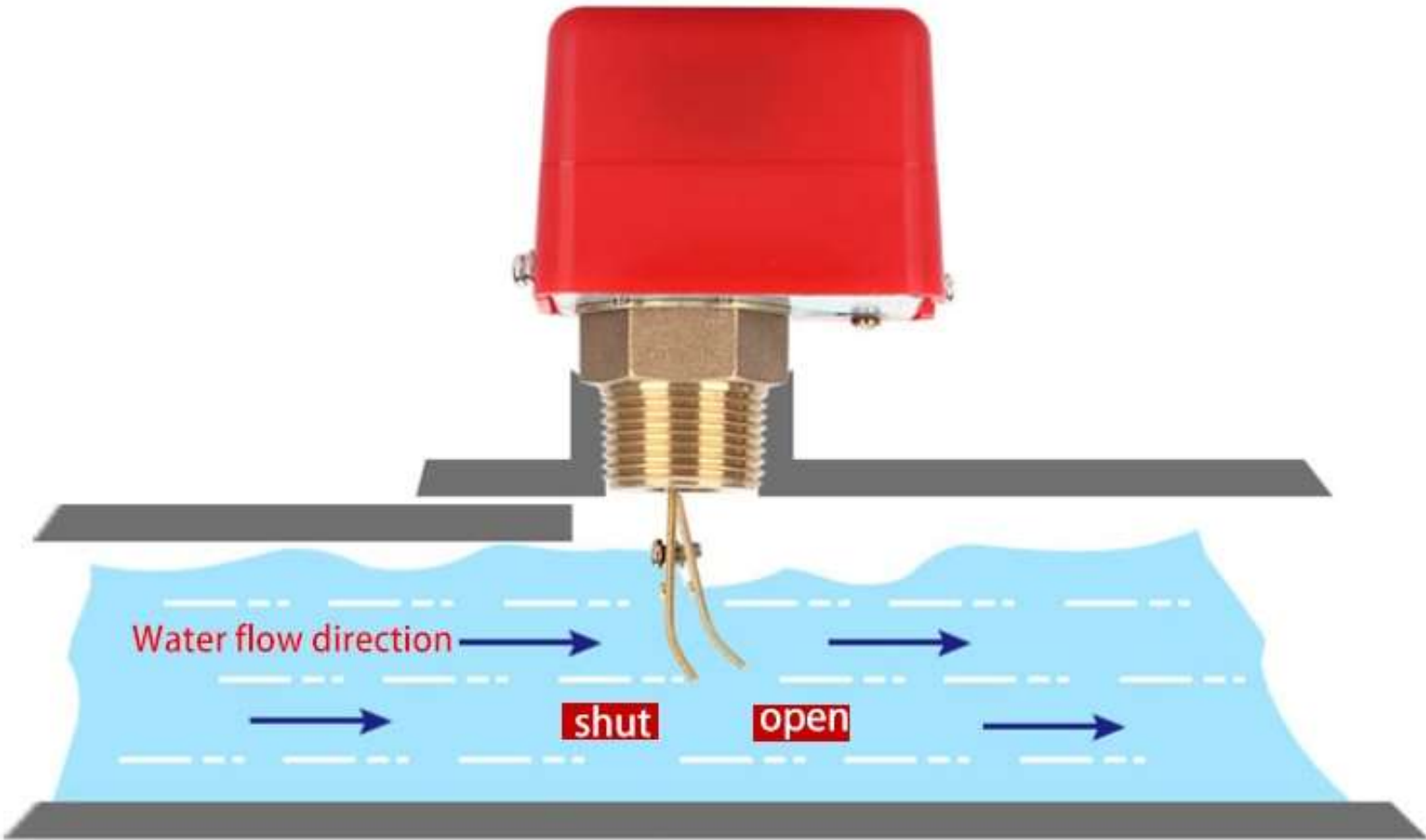


model	size	Target Plate
BBFS-25	G1"	5 slices



INSTALLATION DIAGRAM

More specifications available



Single-pole double-head micro-movement working state, when the flow rate rises to the switching value, terminal 1-2 is connected; when the flow rate drops to the lower switching value, 1-3 is connected

