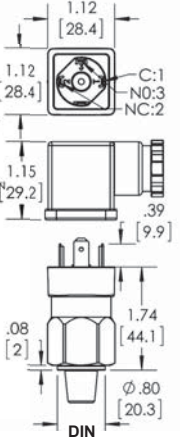
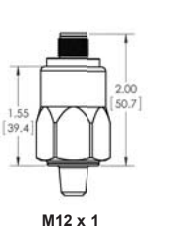
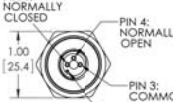
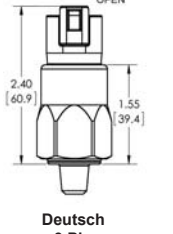
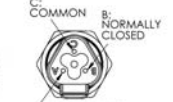
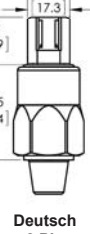
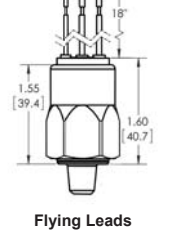
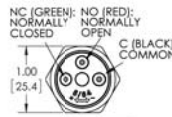
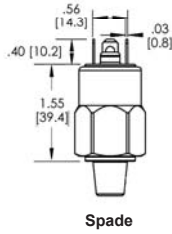
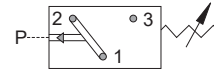


BPA/BPF

Adjustable High Pressure Switches



Model	Adjustment Range		Avg. Differential		Model	Adjustment Range		Avg. Differential	
	PSI	Bar	PSI	Bar		PSI	Bar	PSI	Bar
1	10 - 85	.35 - 5.8	1.0 - 10	0.07 - 0.7	3	500 - 2500	35 - 172	70 - 300	5 - 21
1A	65 - 300	4.5 - 21	8 - 30	0.55 - 2.1	4	1000 - 6000	69 - 414	150 - 600	10 - 41
2	125 - 600	8.6 - 41	20 - 80	1.4 - 5.5	5	500 - 3500	35 - 241	75 - 300	5 - 21

ELECTRICAL:

Standard: 5A, 125V/250VAC - U.L. Recognized*
 5A, 12/24VDC - U.L. Recognized*
 Option -7: 0.02A, 60VDC - U.L. Recognized*
 Gold contacts may be required for less than 12 VDC and 20 milliamps

MANUFACTURER'S OTHER RATING:
 5A @ 40VDC

WETTED MATERIAL:

Diaphragm: Buna-N (Standard)
 (optional EPDM, KAPTON®, VITON®, Low Temp Nitrile)
 Housing: Zinc-Nickel Plated Steel
 (optional: 316 Stainless Steel or Nickel Plated Steel)

PROTECTION:

Exposed Terminals – IP00
 DIN HC - IP65
 Flying Leads, M12, Deutsch Integral - IP69

REPEATABILITY:

± 2% of full set point range at 70°F (21°C)
 Ambient Temperature

SWITCH TYPE:

Snap Action

MECHANICAL LIFE:

1,000,000 cycles

TEMPERATURE RANGE:

Buna - N: -15° to +230°F (-26° to 110°C)
 EPDM: -10° to +250°F (-23° to 121°C)
 KAPTON®: -40° to +230°F (-40° to 110°C)
 VITON®: 0° to +302°F (-18° to 150°C)
 (® Registered Trademark of DuPont)
 Low Temp Nitrile: -40° to 230°F (-40° to 110°C)

MAXIMUM OVERPRESSURE:

9000 PSI (620 Bar) - Static
 7500 PSI (517 Bar) - Dynamic

WEIGHT:

Approx. 0.2 lbs (0.09 kg)

ORDERING INFORMATION

BPA	- * 2	- * R	- 4M	- C	- H	- * 1
Model	Set Point	Direction	Port Size	Circuit	Terminal	Options
BPA Field Adjustable	See Above Adjustment Ranges	R - PSI Rising F - PSI Falling BR - Bar Rising BF - Bar Falling	2M - 1/8 NPT 4M - 1/4 NPT 4MF - 1/4 NPTF (Male Dryseal thread)	A - SPST / NO B - SPST / NC C - SPDT	SP - 1/4" x 1/32" Spade TS - 6-32 Terminal Screws FL - 18" Flying Leads FLL - Advise additional length of leads if required	* - Omit If Standard 1 - VITON® Diaphragm 2 - EPDM Diaphragm 3 - KAPTON® Diaphragm * * For Model Ranges 1, 1A & 2 Only 15 - Low Temp Nitrile Diaphragm 4 - 316 SS Housing 4A - Steel -Nickel Plated 5 - Spiral Restrictor 6 - Oxygen Cleaned 7 - Gold Contacts UL - UL Recognized** **For Selected Models Only - Consult Factory **** Call Factory for Shrink Wrap Options & Pricing
BPF Factory Set	*Model BPF Specify Set Point Required ** For Set points below 10 psi Consult Factory	*Omit For Model BPA	2G - 1/8 BSPP 4G - 1/4 BSPP (undercut for an o-ring seal) 4GS - 1/4 BSPP (no undercut) 4S - 7/16X20 SAE MALE 4SW - 7/16X20 SAE Swivel 6S - 9/16X18 SAE MALE M10 - M10X1* M12 - M12X1.5 * *Consult Factory for Specials.		FLWTF - Weatherpack Tower Female FLWTM - Weatherpack Tower Male FLWSF - Weatherpack Shroud Female FLWSM - Weatherpack Shroud Male H - DIN 43650A Male Half Only HC - DIN 43650A Cable Clamp HN - DIN 43650A 1/2 Conduit (female) HCC - XXX (Specify Length in Inches) HC11A - DIN Light NO/NC 110V HC11B - DIN Light NO/NC 12VDC HC11C - DIN Light NO/NC 24VDC HC11D - Indicating Light Green/Red (can only be used with SPDT Circuit) DI - Deutsch Integral M12 - M12 X 1 PP - Packard Connector	

