

1/2"- 1 1/4" BSP SS304 Electric Actuated Proportional Ball Valve 5 Wires, Feedback & Indicator



Technical Data

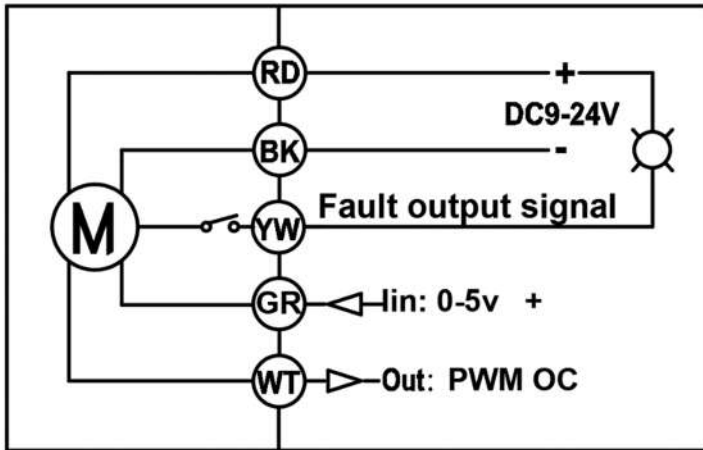
Motorized Water Valve is ideal for chemical dosing, precision control, water treatments, brewing and water meters.

Design Features

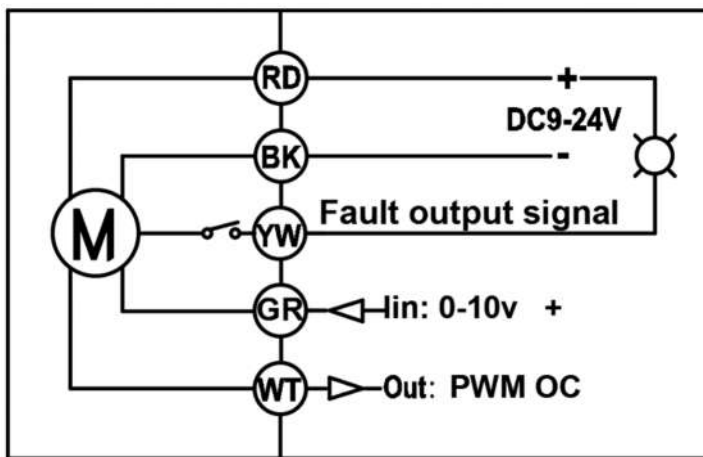
- Beautiful appearance, compact structure, high precision, large output torque, service life is not less than 70,000 times.
- The actuator and valve can be assembled from multiple angles, which is convenient for users to allocate space.
- Ball valve adopts floating soft seal structure, no drip leakage, suitable for heavy dirt and long-term no action occasions.
- Protection grade IP67, can be used in relatively humid environment.

Product size	1/2", 3/4", 1", 1 1/4" BSP	Valve Body Material	SS304
Maximum working pressure	1.0 MPa (10 bar)	Actuator Material	Polyphenylene Oxide
Circulation medium	Fluid, air	Sealing Material	FKM & PTFE
Working voltage	DC 9 - 24V	Actuator rotation	Full Port or 30° V Ball
Input Signal	4-20mA, 0-5V, 0-10V	Max. torque force	3 N.m
Output Signal	PWM 4-20mA	Cable Length	0.5m
Working current	≤500mA	Environment temperature	-15°C~60°C
Running Time	≤7S	Media temperature	2°C~90°C
Control Position	75-80 Positions	Visual Position Indicator	Yes
Lifetime	70,000 times at least	Protection	IP67

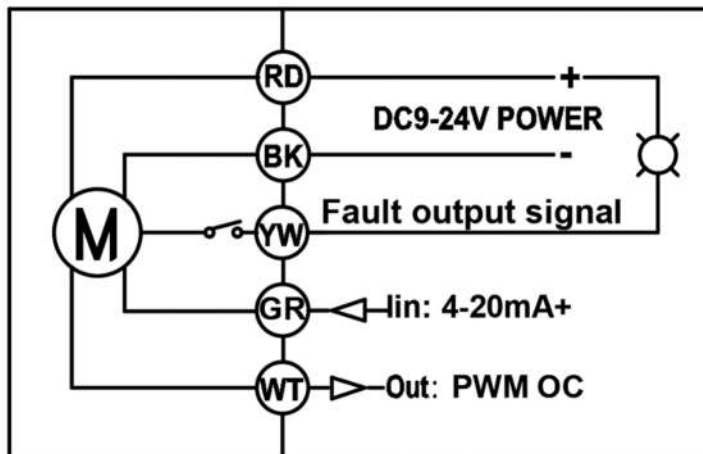




- 1.RD (red wire) connects DC9-24V positive pole
- 2.BK (black wire) connects 0-5V-
- 3.GR (green wire) connects input position/control current+/control voltage+(4-20mA,0-5V and 0-10V) positive pole
- 4.YW connects error output, OC output.
- 5.WT connects position feedback, OC output PWM signal

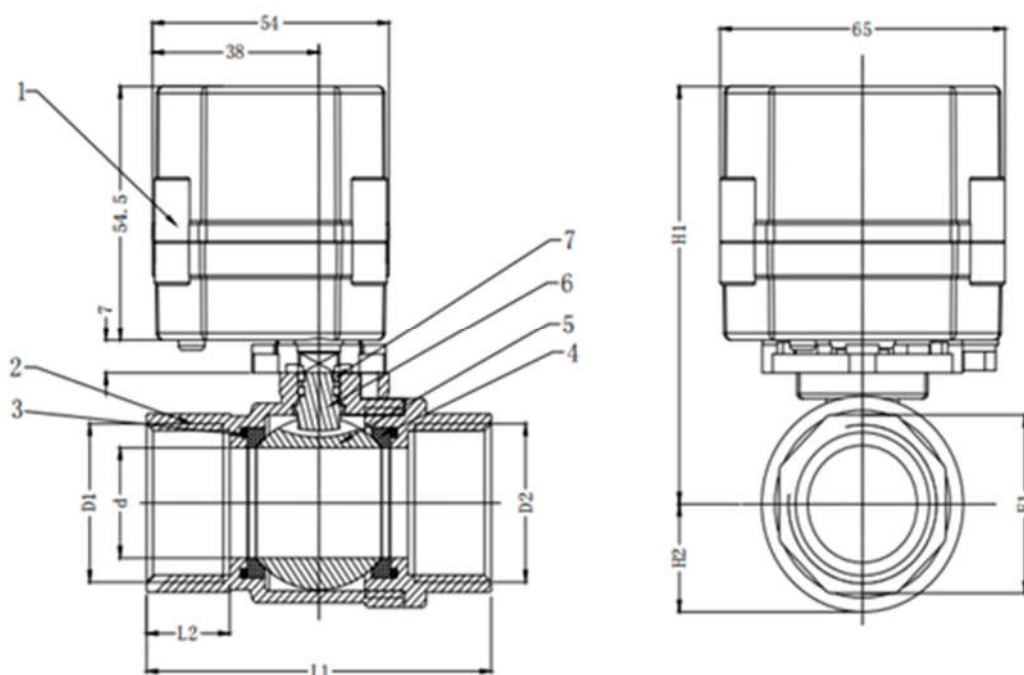


- 1.RD (red wire) connects DC9-24V positive pole
- 2.BK (black wire) connects 0-10V-
- 3.GR (green wire) connects input position/control current+/control voltage+(4-20mA,0-5V and 0-10V) positive pole
- 4.YW connects error output, OC output.
- 5.WT connects position feedback, OC output PWM signal



- 1.RD (red wire) connects DC9-24V positive pole
- 2.BK (black wire) connects 0-10V-
- 3.GR (green wire) connects input position/control current+/control voltage+(4-20mA,0-5V and 0-10V) positive pole
- 4.YW connects error output, OC output.
- 5.WT connects position feedback, OC output PWM signal





No.	Name	Material	Quantity
1	Actuator	PPO	1
2	Body & Cover	Stainless Steel	1
3	O-ring	FPM	2
4	Sealing	PTFE	2
5	Ball	Stainless Steel	1
6	Stem	Stainless Steel	1
7	O-ring	FPM	1

Model	Size	d	L1	L2	E1	H1	H2
25-B2-CH	1"	24	71	15	38	89	22
20-B2-CH	3/4 "	20	66	15	31	87	19
15-B2-CH	1/2"	15	56	12	25	84	16
10-B2-CH	3/8 "	10	49	12	20.5	80.5	12
8-B2-CH	1/4"	8	49	12	20.5	80.5	12

