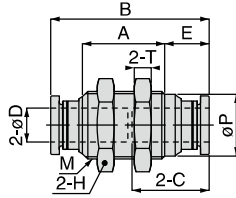


## PM Bulkhead Union

RoHS compliant



OP P.754 3D CAD CAD

Unit : mm

Model code	Tube O.D. øD	M	B	E	A	øP	Tube end C	Hex. H	T	Orifice bore (ømm)	Weight (g)	CAD file name
PM4④	4	M12×1	30.8	9.5	14.8	10.8	14.9	14	4	3	11	PM4_
PM6④	6	M14×1	34.9	9.5	19	12.5	17	17	4	5	16	PM6_
PM8④	8	M16×1	37.4	10.5	19.4	14.6	18.2	19	4	7	19	PM8_
PM10④	10	M20×1	42.4	11.9	21.6	18.5	20.7	24	5	9	35	PM10_
PM12④	12	M22×1	47.6	13.2	24.2	20.4	23.3	27	6	11	52	PM12_
PM16④	16	M28×1.5	50.6	13.2	27.2	25.5	24.8	32	6	15	73	PM16_
PM5/32④	5/32	M12×1	30.8	9.5	14.8	10.8	14.9	14	4	3	10	PM5_32_
PM3/16④	3/16	M14×1	35.7	9.9	19	12.5	17.4	17	4	4	16	PM3_16_
PM1/4④	1/4	M14×1	34.9	9.5	19	12.5	17	17	4	5.3	16	PM1_4_
PM5/16④	5/16	M16×1	37.4	10.5	19.4	14.6	18.2	19	4	7	19	PM5_16_
PM3/8④	3/8	M20×1	42.4	11.9	21.6	18.5	20.7	24	5	8.5	36	PM3_8_
PM1/2④	1/2	M22×1	47.2	13	24.2	20.4	23.1	27	6	11.7	51	PM1_2_

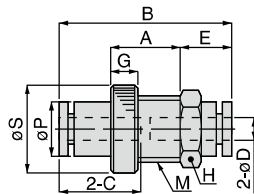
FITTING CONTROLLER VALVE TUBE MAKE TO ORDER PRODUCTS

70

Standard Series Mini Series Stainless Series Chemical Series PP Series EG Series Anodized Brass Series High Pressure Series Minimal Series Star-Fitting Series Rotary Series Twist-Proof Fitting Block and Connector Coupling Color Cap

## PMP Bulkhead Union P

RoHS compliant



OP P.754 3D CAD CAD

Unit : mm

Model code	Tube O.D. øD	M	B	E	A	øP	øS	Tube end C	Hex. H	G	Orifice bore (ømm)	Weight (g)	CAD file name
PMP4④	4	M12×1.5	31.4	9.2	12	10	16	14.9	14	5	3	6.8	PMP4
PMP6④	6	M14×1.5	35.5	9.8	15	12.3	19	17	17	5	4.9	9.6	PMP6
PMP8④	8	M16×1.5	38.4	10.7	15.5	14.2	22	18.1	19	6	7	14	PMP8
PMP10④	10	M20×2	43	13	18.5	17.5	27.5	20.7	24	6	8	23	PMP10
PMP12④	12	M24×2	48.4	13.2	20.5	21	31	23.4	27	6	11	32	PMP12
PMP5/32④	5/32	M12×1.5	31.4	9.2	12	10	16	14.9	14	5	3	6.8	PMP5_32
PMP1/4④	1/4	M14×1.5	35.5	9.8	15	12.3	19	17	17	5	5	9.5	PMP1_4
PMP5/16④	5/16	M16×1.5	38.4	10.7	15.5	14.2	22	18.1	19	6	7	14	PMP5_16
PMP3/8④	3/8	M20×2	43	13	18.5	17.5	27.5	20.7	24	6	8	24	PMP3_8

Common caution in this page

- ※ 1. ④ in Model code / Replaced with "W" for Light-gray color, "-C" for Clean-room package, "W-C" for Light-gray color and Clean-room package, "-UC" for Clean-wash and Clean-room package
- ※ 2. Orifice bore is the smallest passage converted in terms of the diameter.