

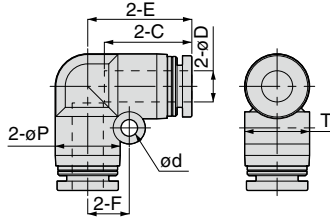
Tube Fitting

FITTING

PV

Union Elbow

RoHS compliant



OP.
P.754

3D
CAD

CAD

Unit : mm

Model code	Tube O.D. øD	øP	Tube end C	E	ød	F	T	Orifice bore (ømm)	Weight (g)	CAD file name
PV4④	4	10	14.9	16.9	3.2	6.5	10.4	2.8	5.1	PV4
PV6④	6	12.5	17	20.1	3.2	8	13.5	5	7.3	PV6
PV8④	8	15	18.1	22.4	4.2	10	15.6	7.2	11	PV8
PV10④	10	17.5	20.2	26.2	4.2	12	18.2	8.3	17	PV10
PV12④	12	21	23.4	29.4	4.2	14	21.7	10	25	PV12
PV16④	16	25	24.1	33.1	4.2	12	25.6	13	31	PV16
PV5/32④	5/32	10	14.9	16.9	3.2	6.5	10.4	2.8	5.1	PV5_32
PV3/16④	3/16	12.5	17.4	20.5	3.2	8	13.5	4	7.5	PV3_16
PV1/4④	1/4	12.5	17	20.1	3.2	8	13.5	5	7.1	PV1_4
PV5/16④	5/16	15	18.1	22.4	4.2	10	15.6	7.2	11	PV5_16
PV3/8④	3/8	17.5	20.2	26.2	4.2	12	18.2	8.5	18	PV3_8
PV1/2④	1/2	21	23.7	29.7	4.2	14	21.7	10.7	23	PV1_2