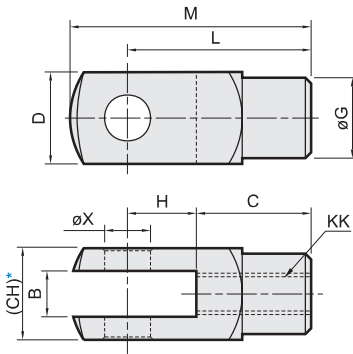
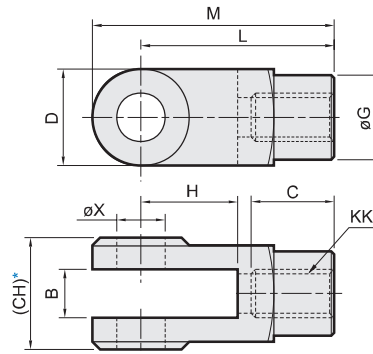


Y connector

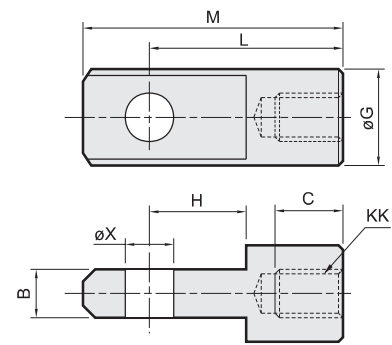
$\phi 32 \sim \phi 40$



$\phi 50 \sim \phi 100$



I connector

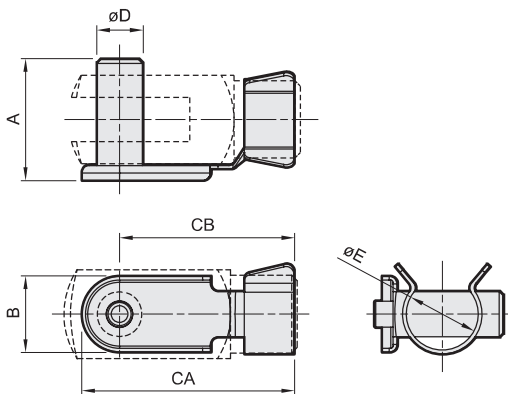


* Please do not take the sand casting plate as the mounting plate, because we do not machine it.
If you have this special demand, please contact our sales representative.

Code Tube I.D.	B		C		CH		D		G		H		KK		L		M		X ^{H9}
	Y	I	Y	I	Y	I	Y	I	Y	I	Y	I	Y	I	Y	I	Y	I	
32	10 ^{+0.5, +0.15}	10 ^{-0.1, -0.2}	20	17	19	—	19	—	$\phi 18$	$\phi 20$	20	15	M10×1.25	40	40	52	52	$\phi 10$	$\phi 10$ ^{+0.04, 0}
40	12 ^{+0.5, +0.15}	12 ^{-0.1, -0.2}	24	21	22	—	22	—	$\phi 20$	$\phi 24$	24	18	M12×1.25	48	48	62	62	$\phi 12$	$\phi 12$ ^{+0.04, 0}
50	16 ^{+0.3, +0.1}	16 ^{-0.1, -0.3}	28	23	32	—	32	—	$\phi 28$	$\phi 32$	32	32	M16×1.5	64	64	89	86	$\phi 16$	$\phi 16$ ^{+0.04, 0}
63	16 ^{+0.3, +0.1}	16 ^{-0.1, -0.3}	28	23	32	—	32	—	$\phi 28$	$\phi 32$	32	32	M16×1.5	64	64	89	86	$\phi 16$	$\phi 16$ ^{+0.04, 0}
80	20 ^{+0.3, +0.1}	20 ^{-0.1, -0.3}	33	30	45	—	40	—	$\phi 36$	$\phi 36$	40	40	M20×1.5	80	80	100	108	$\phi 20$	$\phi 20$ ^{+0.05, 0}
100	20 ^{+0.3, +0.1}	20 ^{-0.1, -0.3}	33	30	45	—	40	—	$\phi 36$	$\phi 36$	40	40	M20×1.5	80	80	100	108	$\phi 20$	$\phi 20$ ^{+0.05, 0}

PIN

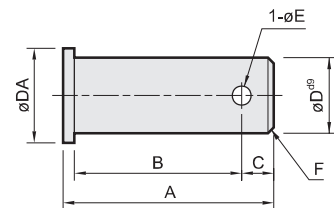
S



for floating pin

Code Tube I.D.	A	B	CA	CB	D ^{g9}	E
32	26	14	45	38	$\phi 10$	$\phi 10$ ^{-0.04, -0.07}
40	31	16	54	46	$\phi 12$	$\phi 12$ ^{-0.05, -0.09}
50,63	42	20	70	60	$\phi 16$	$\phi 16$ ^{-0.05, -0.09}
80,100	56	30	91	76	$\phi 20$	$\phi 20$ ^{-0.06, -0.11}

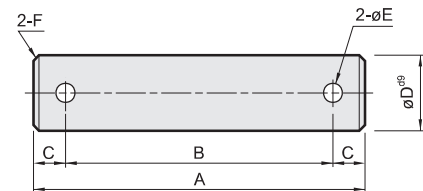
P



for Y & I connector

Code Tube I.D.	A	B	C	D ^{g9}	DA	E	F	Split pin	
32	30	25	3.5	$\phi 10$	$\phi 10$ ^{-0.06, -0.09}	14	3.2	1	3.2×20L
40	37	30	5	$\phi 12$	$\phi 12$ ^{-0.06, -0.09}	16	3.2	1	3.2×20L
50,63	47	37	7	$\phi 16$	$\phi 16$ ^{-0.05, -0.09}	22	4	1	4×25L
80,100	62	50	8	$\phi 20$	$\phi 20$ ^{-0.06, -0.11}	30	5	1.5	5×35L

P



for CA & CB

Code Tube I.D.	A	B	C	D ^{g9}	E	F	Split pin	
32	69	55	7	$\phi 10$	$\phi 10$ ^{-0.05, -0.09}	4	1.0	4×20L
40	76	62	7	$\phi 12$	$\phi 12$ ^{-0.05, -0.09}	4	1.0	4×20L
50	84	70	7	$\phi 12$	$\phi 12$ ^{-0.05, -0.09}	4	1.0	4×20L
63	94	80	7	$\phi 16$	$\phi 16$ ^{-0.05, -0.09}	4	1.0	4×30L
80	117	100	8.5	$\phi 16$	$\phi 16$ ^{-0.05, -0.09}	5	1.5	5×30L
100	137	120	8.5	$\phi 20$	$\phi 20$ ^{-0.05, -0.09}	5	1.5	5×35L